



**ROCBIT GROUP**

ROCBIT GROUP  
8 Lake Road Denlee Germiston South Africa  
Tel : +27 11 824 0700/1/2  
Fax : +27 11 824 4458  
E-Mail : [rocbitdrillingequip@nirtek.com.co.za](mailto:rocbitdrillingequip@nirtek.com.co.za)  
Web : [www.rocbit.co.za](http://www.rocbit.co.za)



## SOLITARY RING BIT SYSTEMS

**SOLITARY RING BIT SYSTEMS** are designed for drilling end bearing piles to bed rock. System is designed to drill straight piles through boulders, rock layers and also into inclined bed rock. Heavy duty ring bit is not attached to casing shoe, which makes it most economical of the ring bit alternatives.



Main **applications** for solitary systems are:

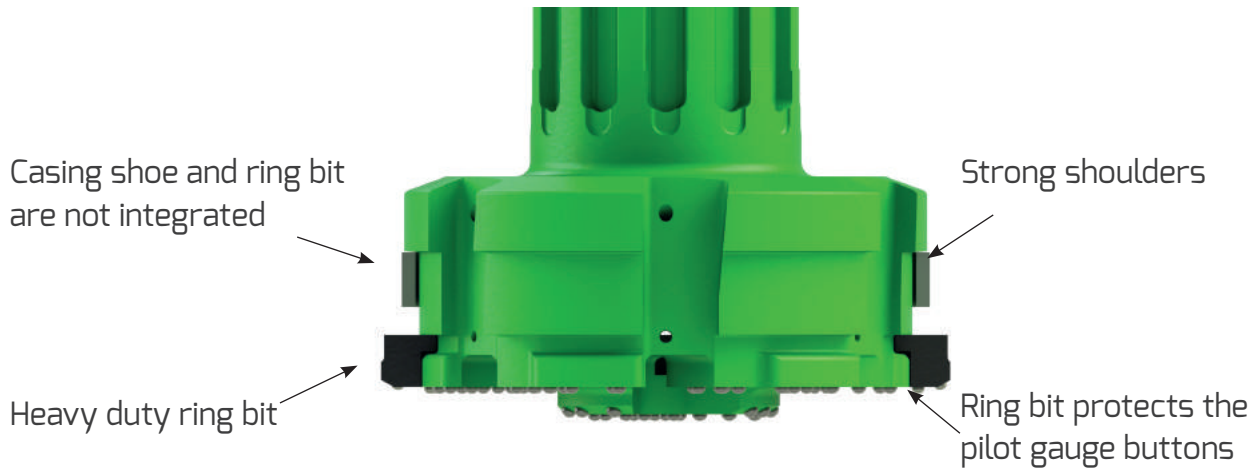
1. End bearing piles including micro piling
2. Pilings with sacrificed casings, which have no large ID ring bit requirements
3. Slope stabilization
4. Pipe walls, king piles etc.

Working for the Future of Down-The-Hole Drilling

# SPIRALFLUSH®



## SOLITARY SYSTEM DESIGN FEATURES



System is available from 114 to 1524 mm casings and for all major shank designs.

System product code	Casing OD		Max wall		Ring bit ID		Ring bit OD		Pilot bit OD	
	mm	inch	mm	Inch	mm	inch	mm	inch	mm	inch
S114-8-68	114,3	4 1/2"	8	5/16"	68	2 43/64"	125	4 59/64"	96	3 25/32"
S140-10-86	139,7	5 1/2"	10	25/64"	86	3 25/64"	149	5 55/64"	119	4 11/16"
S168-12.7-106	168,3	6 5/8"	12,7	1/2"	106	4 11/64"	179	7 3/64"	141	5 35/64"
S178-12.7-116	177,8	7"	12,7	1/2"	116	4 9/16"	188	7 13/32"	152	5 63/64"
S219-12.7-150	219,1	8 5/8"	12,7	1/2"	150	5 29/32"	230	9 1/16"	191	7 33/64"
S273-12.7-192	273	10 3/4"	12,7	1/2"	192	7 9/16"	290	11 27/64"	245	9 41/64"
S323-14.2-240	323,9	12 3/4"	14,2	9/16"	240	9 29/64"	339	13 11/32"	291	11 29/64"
S406-16-328	406,4	16"	16	5/8"	328	12 29/32"	418	16 29/64"	370	14 9/16"
S508-16-422	508	20"	16	5/8"	422	16 39/64"	520	20 15/32"	471	18 35/64"
S610-16-502	609,6	24"	16	5/8"	502	19 49/64"	622	24 31/64"	572	22 33/64"
S711-16-610	711,2	28"	16	5/8"	610	24 1/64"	735	28 15/16"	675	26 37/64"
S813-16-700	812,8	32"	16	5/8"	700	27 9/16"	835	32 7/8"	769	30 9/32"
S914-16-800	914,4	36"	16	5/8"	800	31 1/2"	930	36 39/64"	869	34 7/32"
S1016-20-880 *	1016	40"	20	25/32"	880	34 41/64"	1032	40 5/8"	966	38 1/32"
S1220-20-1080 *	1219,2	48"	20	25/32"	1080	42 33/64"	1240	48 13/16"	1168	45 63/64"
S1321-22-1160 *	1320,8	52"	22	55/64"	1150	45 9/32"	1344	52 29/32"	1247	49 3/32"
S1422-22-1250 *	1422,4	56"	22	55/64"	1250	49 7/32"	1446	56 59/64"	1348	53 5/64"
S1524-22-1340*	1524	60"	22	55/64"	1340	52 3/4"	1548	60 15/16"	1462	57 9/16"

\*Large diameter system can be engineered based on the specific customer requirements